

CDOT Workflow MA-6 – Run Advertised Programs

The CDOT Advertised Programs program is designed to allow CDOT users to install approved software without having to wait for OIT staff. This workflow is concerned with CADD software supplied from Bentley Systems Inc. This document contains a table describing which programs are loaded by each entry in the Run Advertised Programs dialog box; A table of guidelines to determine which Advertised Program entry is appropriate for a given situation; And step by step instructions for opening and running the Run Advertised Programs program.

Advertised Programs Options and Associated Software

Below is a table of the current Advertised Program Names and a list of the software that is installed with that option.

Program Name	Software Loaded
Bentley Bridge Suite	Bentley Bridge Suite (RC-PIER, CONSPLICE, CONSPAN)
Bentley Hydraulics Suite	Bentley Hydraulics Suite (StormCAD, CulvertMaster, FlowMaster, StormCAD, HEC-Pac, PondPac)
Bentley Suite	Bentley Suite (MicroStation v8i SS2, InRoads v8i SS2, ProjectWise SS3)
Bentley ProjectWise SS3	Bentley ProjectWise SS3 (Stand Alone)
Bentley Systems, Incorporated Integration Module for Microsoft Office 08.11.9408 English (United States) – Per-systems attended	Bentley ProjectWise-Microsoft Office Integration Module
Bentley View	Bentley View – (CADD file viewer)

Guidelines for using Advertised Programs

Program Name	Software Loaded and installation
Bentley Bridge Suite	<p>Used to install Bentley Bridge Suite. The bridge design products include RC-PIER, CONSPLICE and CONSPAN. Bentley Systems acquired LEAP Software, Inc. in January, 2008.</p> <p>This is a stand alone product and does not require any other Bentley product to run. However, if the Bentley Microstation v8i or Bentley ProjectWise (SELECTseries3) advertised programs are going to be loaded, run those prior to running Bentley Bridge Applications.</p>
Bentley Hydraulics Suite	<p>Used to install Bentley Hydraulics Suite.</p> <p>The hydraulics products include StormCAD, CulvertMaster, FlowMaster, HEC-Pac and PondPac. Bentley System acquired Haestad Methods is August 2004.</p> <p>This is a stand alone product and does not require any other Bentley product to run. However, if the Bentley Microstation v8i or Bentley ProjectWise (SELECTseries3) advertised programs are going to be loaded, run those prior to running Bentley Hydraulics Suite v8i.</p>
Bentley Suite	<p>Used to install the Bentley Suite including MicroStation v8i, InRoads v8i and ProjectWise SS3.</p> <p>This option is used to install the entire Bentley Suite. If MicroStation v8i, InRoads v8i and/or ProjectWise SS3 are already installed on the computer DO NOT run this option because it will corrupt the software. Instead, contact the Help Desk and they will uninstall the old version.</p> <p>Once the old version is uninstalled this option can be safely run.</p>
Bentley ProjectWise SS3	<p>Used to install ProjectWise only. This option should be used by users who need to add documents but do not need other Bentley applications including MicroStation and InRoads.</p> <p>If an older version of ProjectWise (SS2 and older) is already installed on the computer DO NOT run this option because it will corrupt the software. Instead, contact the Help Desk and they will uninstall the old version.</p> <p>Once the old version is uninstalled this option can be safely run.</p>

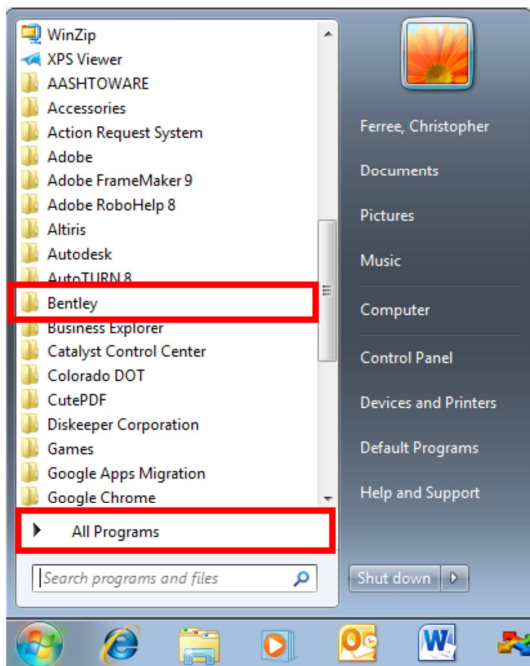
Program Name	Software Loaded and installation
Bentley Systems, Incorporated Integration Module for Microsoft Office 08.11.9408 English (United States) – Per-systems attended	<p>Used to integrate the Microsoft Office products (Word, Excel, Access, etc.) This option integrates Microsoft Office products with ProjectWise allowing documents to be saved and updated directly in ProjectWise.</p> <p>This software requires ProjectWise SS3 to be installed prior to loading. Verify that ProjectWise SS3 is installed before running this program.</p>
Bentley View	<p>Used to view MicroStation DGN and AutoCAD DWG files. Bentley View is a DGN viewer, DWG viewer. It's used to view, measure, and print for MicroStation drawings.</p> <p>This program is for users that need to look at MicroStation files but will not be editing them. Bentley View should not be installed on a computer that already has Microstation v8i installed.</p>

Workflow for Installing Software from Run Advertised Programs

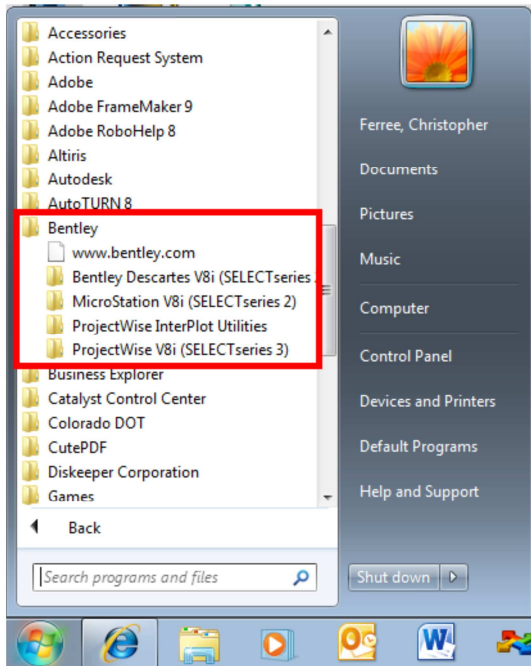
The steps below describe how to install software from Run Advertised Programs. In this example, the Bentley MicroStation v8i advertised program is used, but the process is the same for all programs.

The first step to installing software is to verify that the desired software is not already installed.

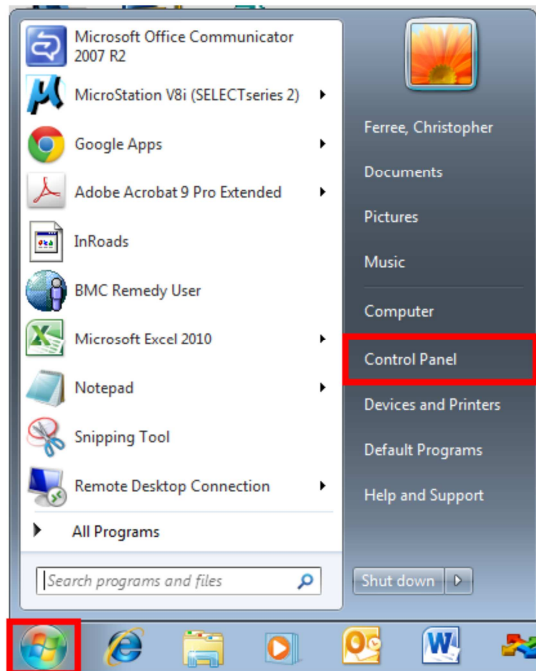
1. Select **Start Menu > All Programs**. Scroll down the list looking for the **Bentley** folder. If there is no **Bentley** folder, proceed to step 4.



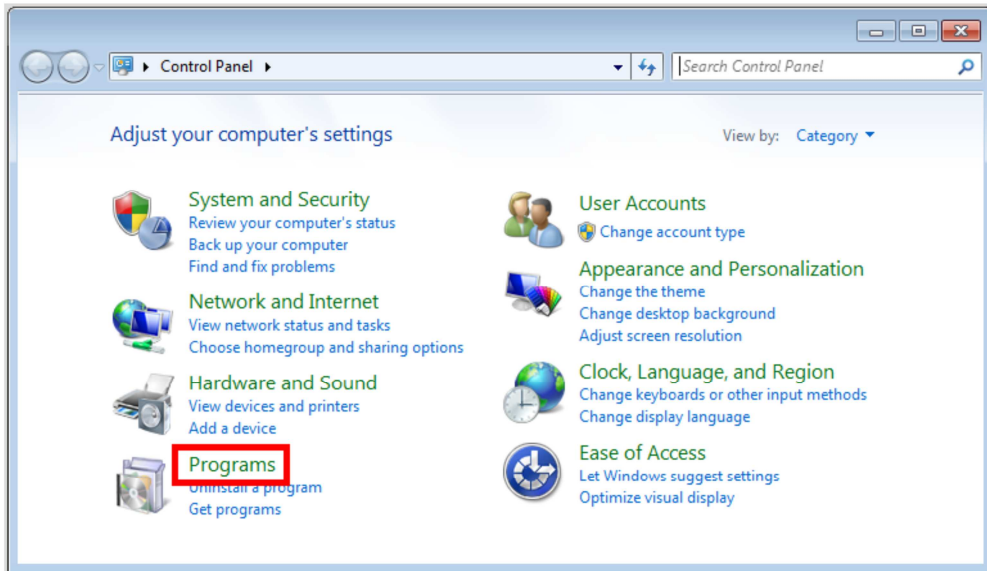
2. Expand the **Bentley** folder and note which products are installed.



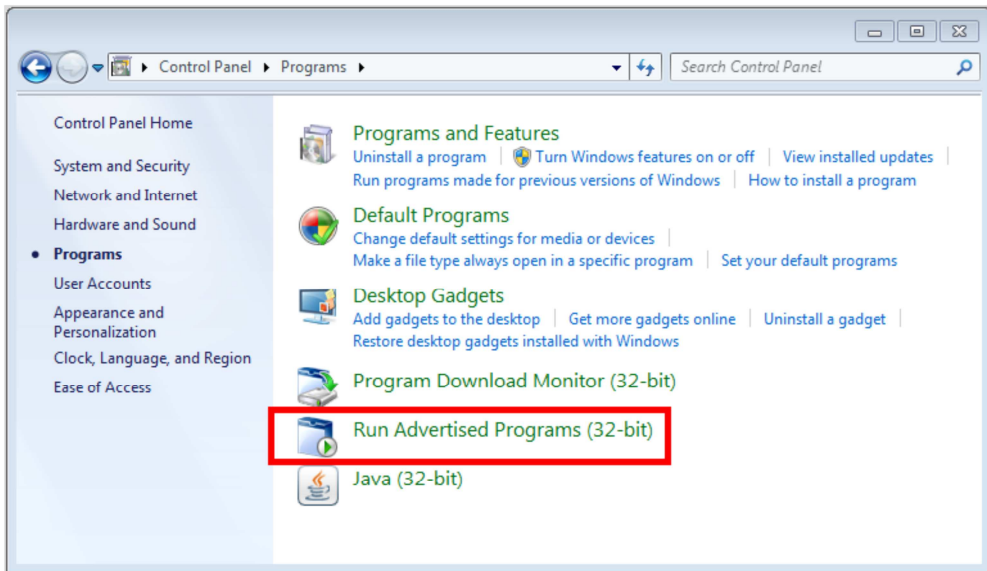
3. Submit **Service Desk Ticket** via email to OIT_ServiceDesk_CDOT@state.co.us or by calling the **Help Desk** at **303-757-9317**. List the programs that need to be uninstalled.
4. Once the software is uninstalled, **Run Advertised Programs** is used to reinstall it.
5. Select **Start Menu > Control Panel**. The **Control Panel** dialog box is displayed.



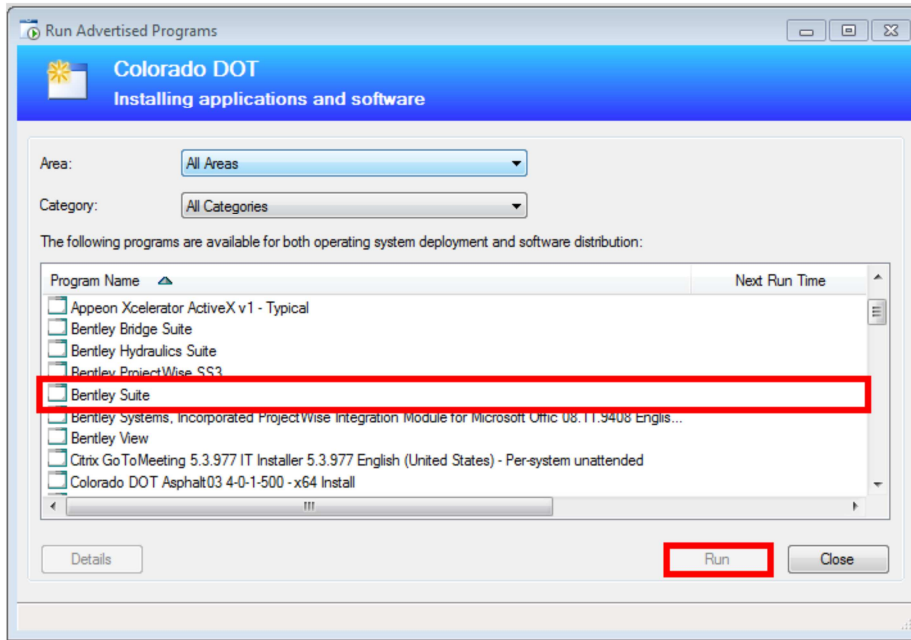
6. In the **Control Panel** dialog box, <D> on **Programs**. This displays the **Programs** pane in the **Control Panel** dialog box.



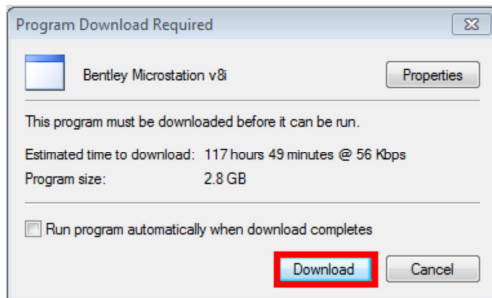
7. In the **Programs** pane, <D> on **Run Advertised Programs (32-bit)**. This displays the **Run Advertised Programs** dialog box.



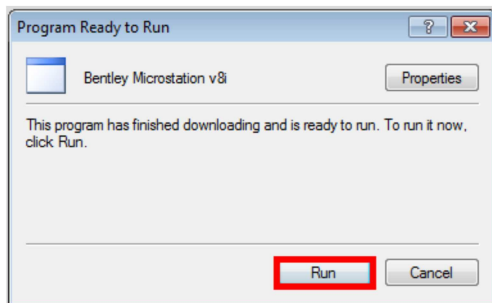
8. In the **Run Advertised Programs** dialog box, highlight the desired program (in this example **Bentley MicroStation V8i** is used). <D> **Run** to launch the program. This displays the **Program Download Required** dialog box.



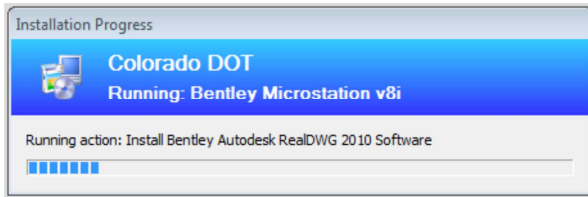
- In the **Program Download Required** dialog box, **<D> Download**. The installer is copied to a temporary folder on the computer.



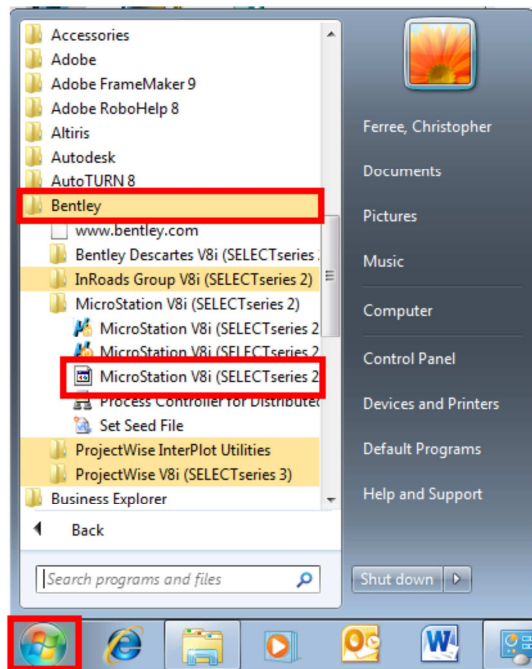
- Once the download is complete, the **Program Ready to Run** dialog box is displayed. **<D> Run** in this dialog box. This displays the **Installation Progress** window.



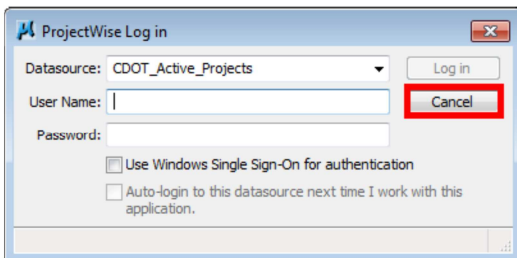
- When the installation is completed the **Installation Progress** window disappears. The programs are now ready for use.



- 12. Close the **Run Advertised Programs** and **Control Panel** dialog boxes.
- 13. If MicroStation was one of the programs installed, it should be launched from the **Start Menu** the first time it is used. This will insure that the program initializes properly.
- 14. Select **Start Menu > All Programs > Bentley > MicroStation V8i (SELECTseries 2) > MicroStation V8i (SELECTseries 2)**. Be sure to select the bottom **MicroStation V8i (SELECTseries 2)** of the three listed.

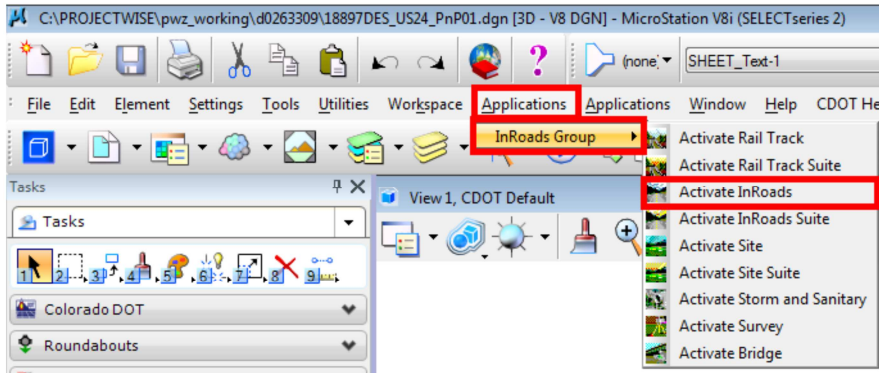


- 15. If the **ProjectWise Log in** dialog box is displayed <D> the **Cancel** button. This will display the **Open** dialog box, providing access to local files. Any dgn file can be used.



- 16. If InRoads was also loaded, it should also be opened at this time.

17. From the InRoads menu bar, select **Applications > InRoads Group > Activate InRoads**. This launches InRoads.



18. Close InRoads and MicroStation. The software is now ready for normal use.